



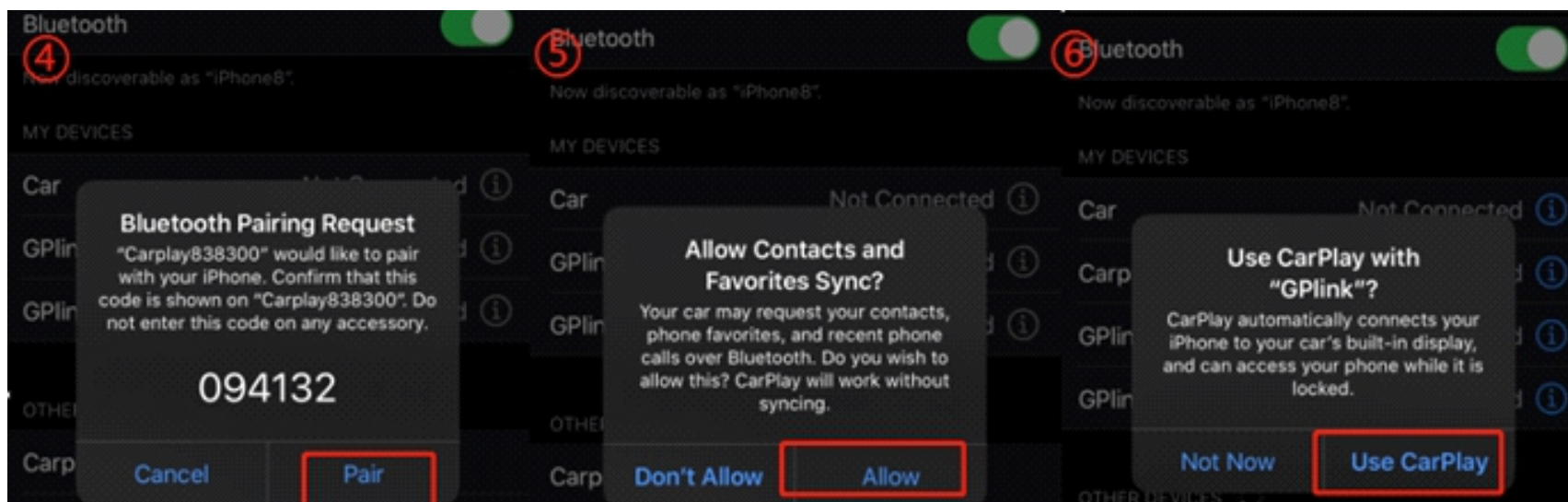
Car Play Media

by automobili

VOLVO MANUAL

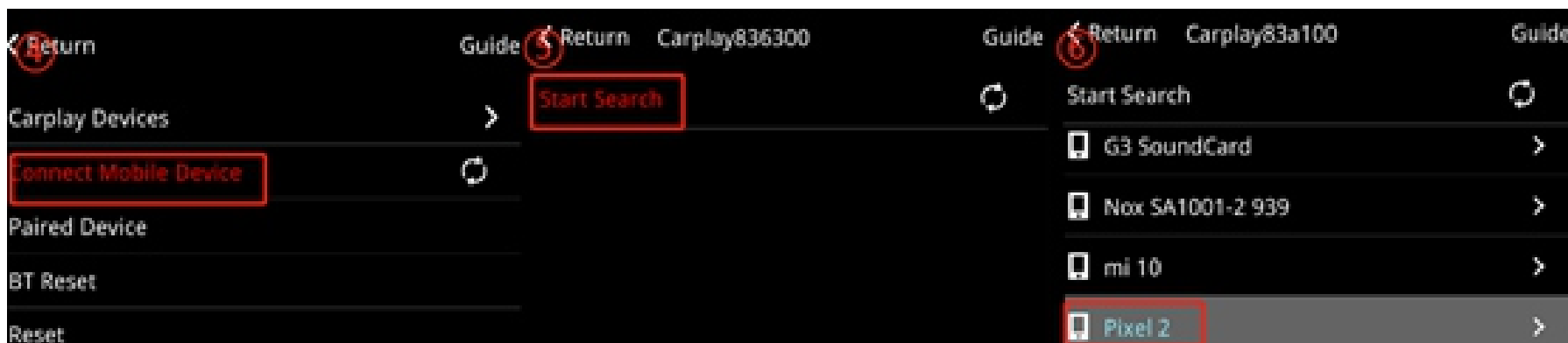
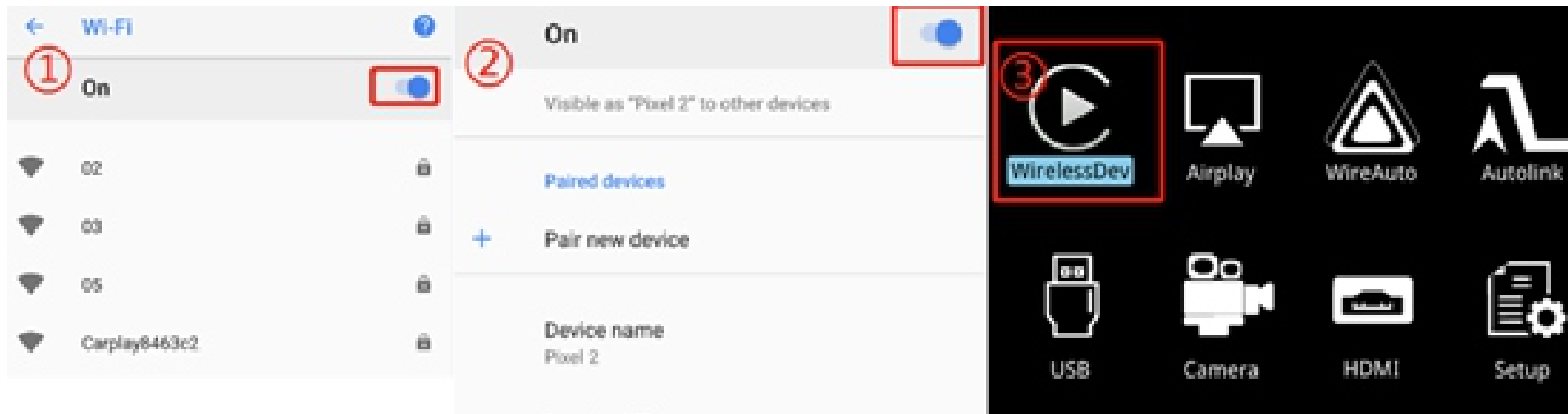
Wireless carplay connection

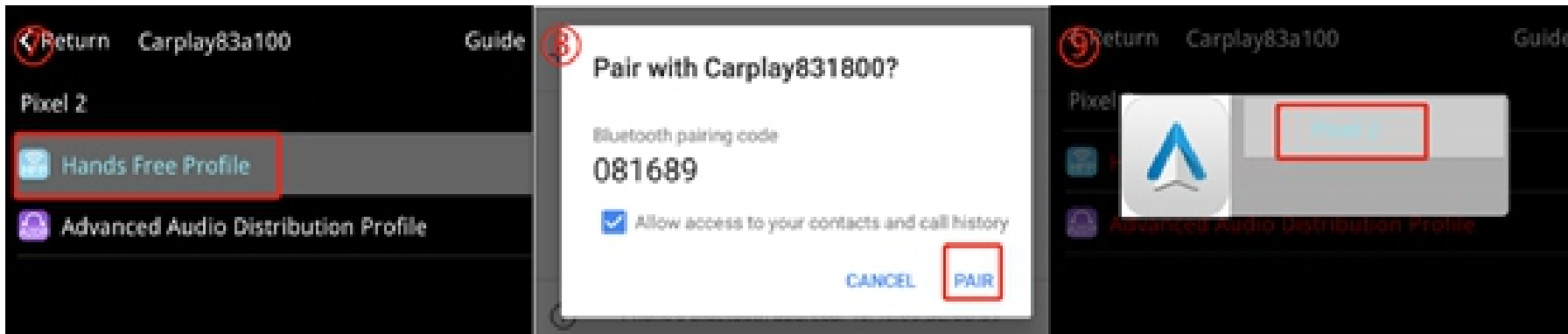
1. Turn on WIFI (Fig.1)
2. Turn on Bluetooth (Fig.2), and connect Carplay's bluetooth (Fig.3/4)
3. After the bluetooth connection is completed, the following prompts will pop up, click 'Allow-Use carplay' (Fig.5/6)



Wireless Android auto connection

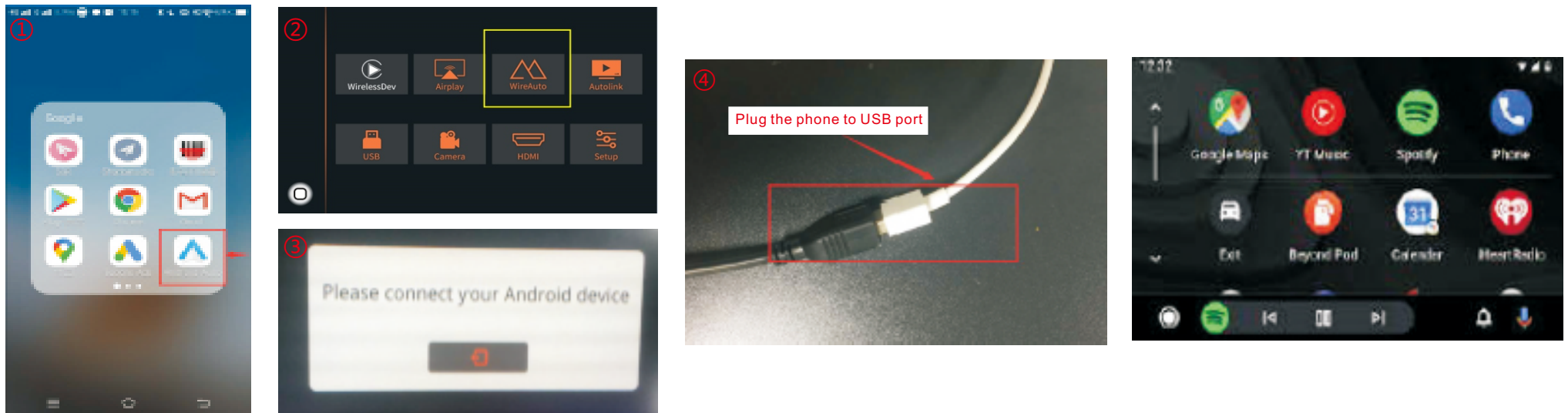
1. Turn on WIFI (Fig.1)
2. Turn on Bluetooth (Fig.2)
3. Enter the Wireless Dev APP(Fig.3)
4. Search the bluetooth of phone(Fig.4 /5 /6)
5. Choose any one of the options on the car end to pair(Fig .7)
6. The pairing request pops up on the phone, select 'pair' (Fig.8/9)





Wired Android auto connection

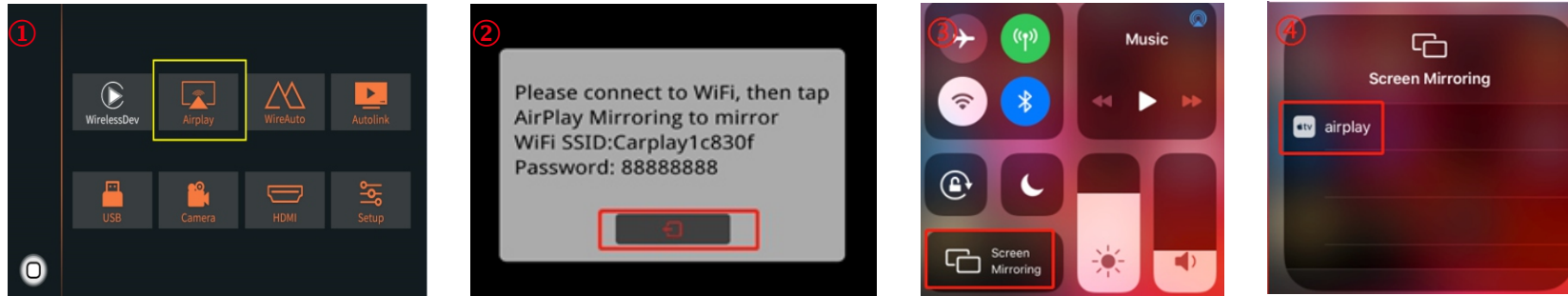
1. Download Android auto APP on Android phone(Fig.1).
2. Click 'WireAuto' icon(Fig.2), the prompt 'Please connect your Android device' will pop up(Fig.3).
3. Plug your phone to USB port. then it will enter Android auto automatically(Fig.4).



Wireless Airplay connection

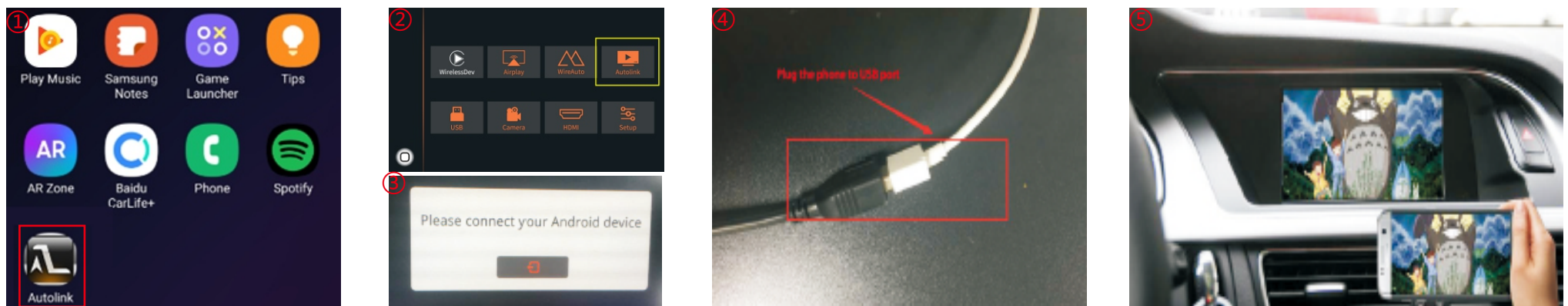
1. Click 'Airplay' icon first (Fig.1), the pairing information with the phone will be displayed (Fig.2).
2. Search wifi signal of Airplay and connect.
3. Turn on Airplay (Fig3/4).

Note: If you have connected Carplay before, please disconnect Carplay wifi first.

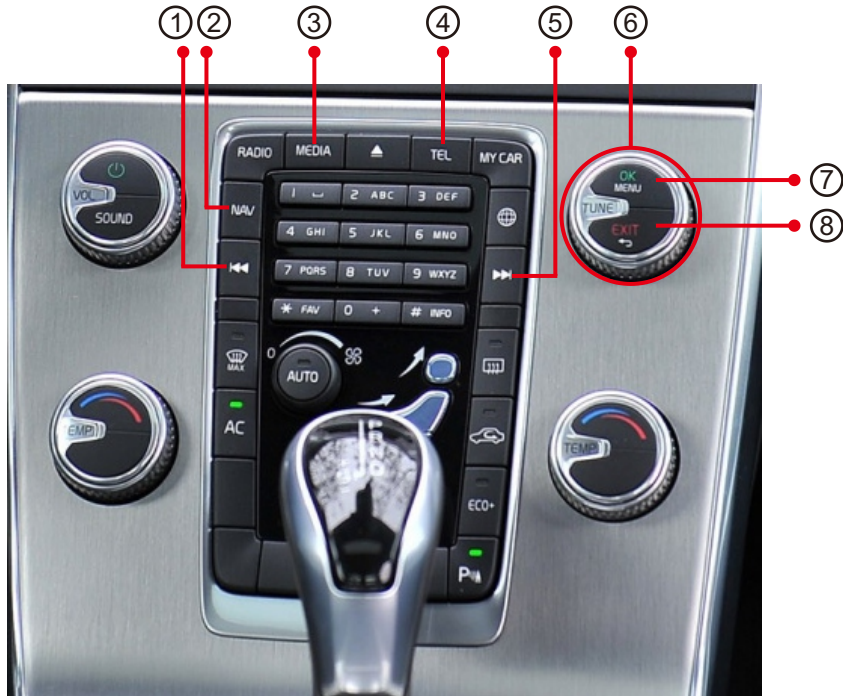


Wired Autolink connection

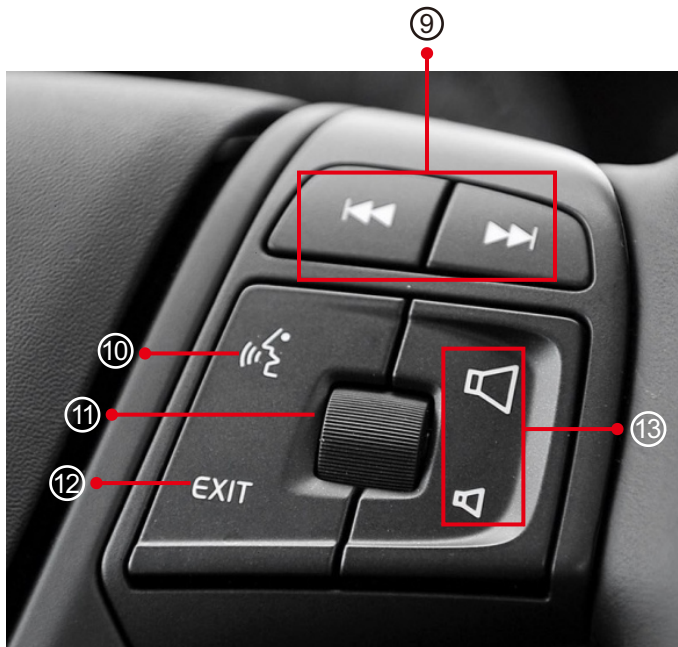
1. Download Android auto APP on your Android phone and tuon on all the prompt permissionsn of this APP (Fig.1).
2. Click 'Autolink' icon(Fig.2), the prompt 'Please connect your Android device' will pop up(Fig.3).
3. Plug your phone to USB port(Fig.4). it will enter Android auto automatically(Fig.5).



Original buttons



- ① Switch to the previous song
- ② Sytem switching, long press 3s to switch system
- ③ Long press for 3s: system switching
Long press for 12s: mandatory upgrade system
- ④ Answer/hang up the call
- ⑤ Switch to the next song
- ⑥ Select function in Carplay/Android auto interface
- ⑦ Short press: confirm
- ⑧ Short press: back
Long press for 12s: restart the box



- ⑨ Switch to the previous/next song
- ⑩ Activate voice function
- ⑪ Scroll up to left, scroll down to right,
press down to confirm
- ⑫ Long press for 3s to switch system
- ⑬ Volume up/down