

User Manual



Car Play Media

by automobili

Contents



NO1.Function statement

NO2.CarPlay Instructions for connect CarPlay

NO3.Operating instructions for steering wheel buttons

NO4.Carplay Instructions for CarPlay upgrade

NO5.Matters needing attention

NO1.Function statement

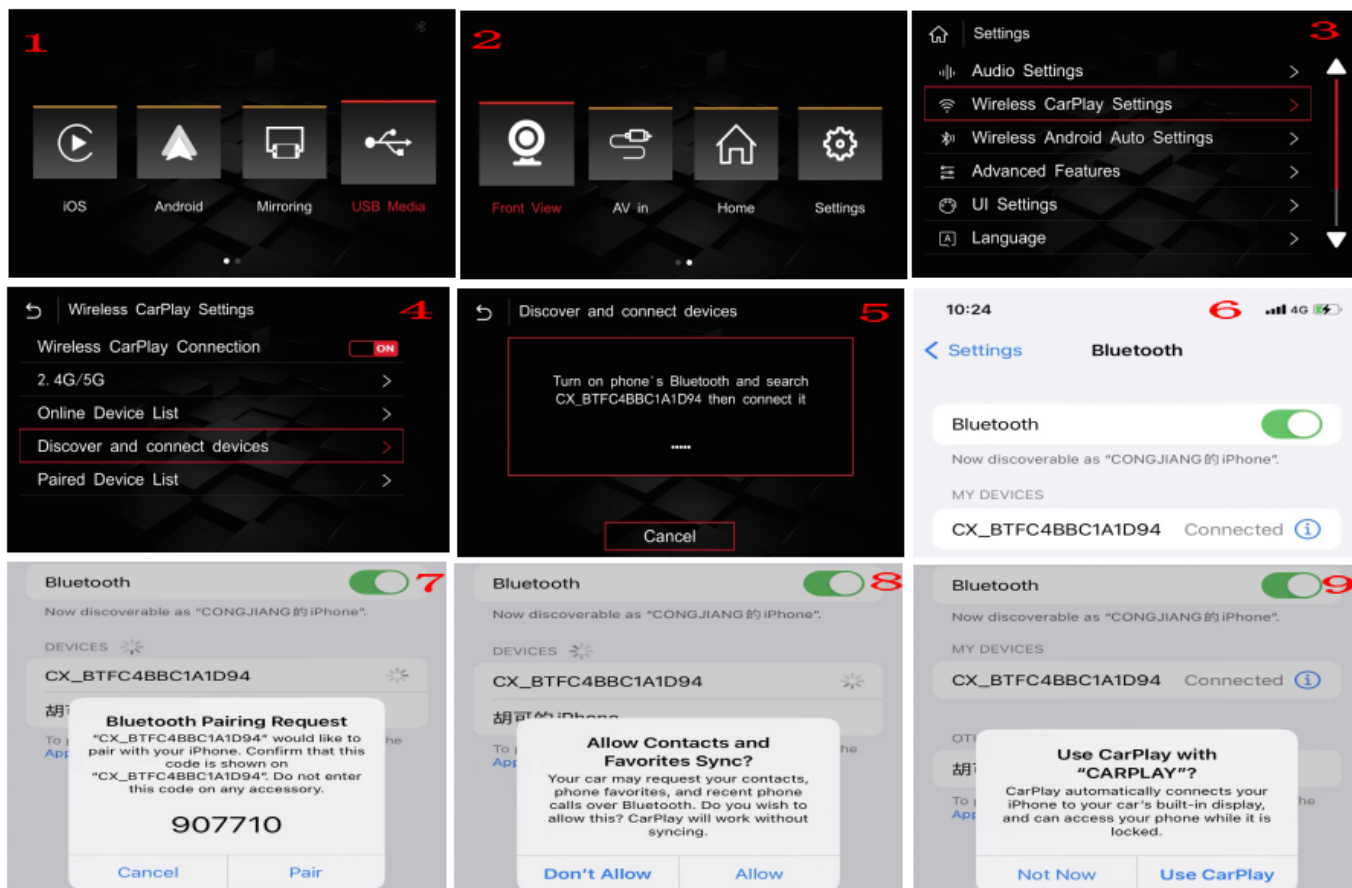
1. CarPlay Support Apple wireless / wired CarPlay
 2. Android Auto Support wireless/wired Anroid Auto
 3. Airplay Support Apple wired airplay
 4. Autolink Support Android wired AutoLink
 5. USB Support play video from USB equipment
 6. EQ Support lossless sound quality, perfect presentation and EQ adjustment
 7. Support reversing radar and track display
 8. Support front view input, exit reversing and automatically switch to front view, with optional lead time
 9. Support adjusting microphone sound quality
- Support user firmware upgrade

NO2.CarPlay nstructions for connect CarPlay

Steps to connect Apple wireless to mobile phone:

1. Switch to the main interface of CarPlay
2. Find the settings of CarPlay main interface
3. Click settings and select wireless CarPlay settings
4. Select discover and connect devices
5. The decoder Bluetooth device name (beginning with CX) will be displayed on the screen
6. Click on the mobile terminal to search for Bluetooth devices and select point pairing in turn. It is allowed to use CarPlay

Proceed as follows:



NO3. Operating instructions for steering wheel buttons

Note: select the external sound source of the original vehicle to AUX or Auxiliary before switching CarPlay





1. Land Rover and Jaguar



1-1.NAV (①) : 3SCarPlay

1-1.NAV(①): Long press 3S to switch to CarPlay interface

1-2. (③④) : CarPlay

1-2.Back(③④): Press any one to return from the CarPlay interface

1-3.CarPlay (②) : CarPlay 10S CarPlay

1-3.Restart CarPlay(②):In the Carplay interface, long press 10s in the upper left corner of the screen to restart the CarPlay decoder

1-4. Siri(⑤):CarPlay, siri

1-4.wake up Siri voice(⑤):In the CarPlay interface, long press the small square in the lower left corner to wake up Siri



2-1.CarPlay:①List(②) 3s CarPlay

2-1.Switch CarPlay: short press ① or long press ② 3S or long press the upper left corner of the screen to switch the CarPlay interface

2-2.Siri (②):List(②)Asiri

2-2.wake up Siri voice (②):short press ② to wake up Siri

2-3.SRC (③) : Press SRC (③) twice on the original vehicle interface to switch aux channel